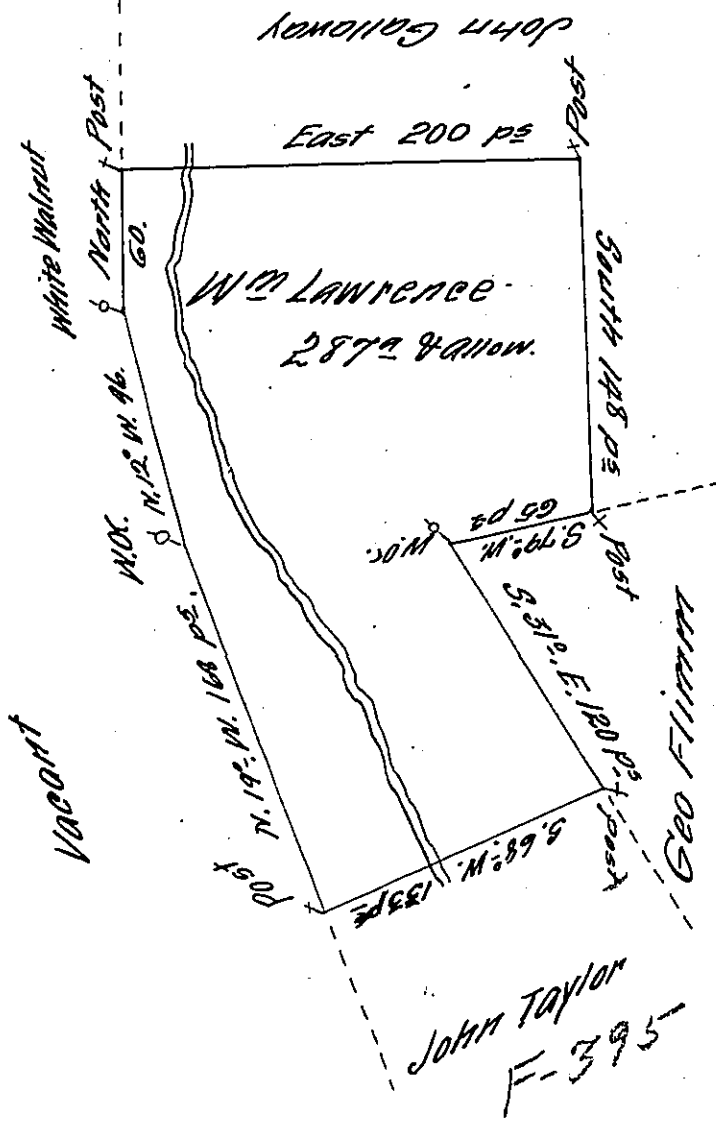


W

W-11-69



A Draught of a Tract of Land Called \_\_\_\_\_ Situate  
 on Humlocks Creek (which emptys into the North East  
 Branch of Susquehanna River on the Western side  
 and between Wier's Falls and Strickshinny) adjoining  
 land Surveyd for John Taylor & others in the County  
 of Northumberland containing Two hundred and eighty  
 four acres besides the usual allow. of 6 p Ct. for Roads  
 &c. Surveyed the 24<sup>th</sup> Day of September 1773 for William  
 Lawrence in pursuance of a Warrant dated the 5<sup>th</sup> Day  
 of August 1773-

by Cha<sup>s</sup> Stewart D<sup>y</sup> Sur<sup>r</sup>.

To John Lukens Esq<sup>r</sup>  
 Survey<sup>r</sup> Gen<sup>l</sup>.

IN TESTIMONY that the above is a copy of the original remaining on file in  
 the Department of Internal Affairs of Pennsylvania, made  
 conformably to an Act of Assembly approved the 16th day of  
 February, 1833, I have hereunto set my Hand and caused  
 the Seal of said Department to be affixed at Harrisburg,  
 this Fifth day of April 1911.

*Henry Howell*  
 Secretary of Internal Affairs.